

The Iola Historical Society's WINDOW



QUARTERLY MEMBER AND ACTIVITIES NEWSLETTER

VOLUME 17, NUMBER 1 | WINTER 2024

Fall '23 Activity Abounds at IHS Depot Street Museums Complex

As we begin the new year, our Depot Street museums and historic village complex is likely to settle into a bit of a Winter snooze through the coming months, following an unusually active Fall '23 season, during which we achieved a good bit of hosting, doing and projecting. What was accomplished promises to bode well for the long-term appeal and integrity of the organization. Let's take the time to step back, recount and reflect on some of the highlights.

On Wednesday, Sept. 13, a small crew of volunteers ventured forth with a Skid-Steer, shovels and rakes, to install the second phase of the handicapped pathways development among the buildings in the *Iola Historic Village* campus. Some touch-up tasks remain to be polished off in the Spring.

On Tuesday, Sept. 19, board member Charlie Thompson and president Clifford Mishler traveled to New London to participate in the Fall ad hoc meeting of Waupaca County's historical organizations. These semi-annual meetings typically attract a turnout of around 20, with that of this coming spring to be hosted by the IHS.

On Monday, Sept. 25, attendees at this monthly gathering – they're regularly held on the last Monday evenings from January through October, excepting May, when the Memorial Day conflict slips the night to Tuesday – were treated to a presentation by Arne Halvorsen, president of Norway's Gausdal Historical Society. We have become sister organizations of sorts, as the ancestry of many Iolaian's are traceable as immigrants from Gausdal.

On Wednesday, Oct. 4, a team of about 20 Iola High School volunteers showed up to perform a Fall community service mission, a semi-annual exercise organized by the school's National Honor Society chapter. This time out they dedicated their efforts to trimming the bushes and low-hanging tree limbs around our village complex.

On Saturday, Oct. 7, we hosted our annual Taste of Norway and Lost Arts Fair, established in 2010, a community fundraising event that also incorporates a craft and gift show component. The 2023 event, blessed with beautiful weather, boasted a solid attendance that was pretty much a throwback to the late pre-Covid years.

— *cont'd on Page 2*



With inclement conditions visiting Iola for the day, the October 13 outdoor dedication plans for the Chester L. Krause Legacy Park were thwarted, with activities being moved inside to the Machine Shed.

PRESIDENT'S MESSAGE

THANKS!

You can't help but have noticed that your *Window* newsletter took on a new look with the appearance of the Fall 2023 issue . . . closing out its 16th year of publication. For those of you who had developed a particular fondness for the old look . . . this change possibly left you mystified . . . so a belated explanation is certainly in order.

The *Window* had benefitted from Doug Watson's uninterrupted graphic artistry talents since its launch with publication of the inaugural Winter 2008 dated issue. As preparations for the new issue were getting underway, Doug approached me with the suggestion that it was probably time for him to stand aside, given the challenging complexities and learning curve challenges that appear to be surfacing to enable implementation of the latest generation of programming desired in the computer publishing world.

At that point, I reached out to our printer – Chain O' Lakes Litho – to determine if we could quickly pull the publishing and printing functions involved of the *Window* under one roof, so to speak, going forward. Owner Andrea Jensen responded favorably, agreeing on such short notice to assume the creative end of the

— continued on Page 7

The Iola Historical Society

210 Depot Street
PO Box 412 • Iola, WI 54945

OFFICERS

Clifford Mishler, President
Lee Halverson, Vice-President
John Bertelson, Jr., Secretary
George Cuhaj, Treasurer

BOARD OF DIRECTORS

Sarah Abramson, Bonny Pethke,
Charlie Thompson

Graphic Design by Chain O' Lakes Litho

BECOME A MEMBER

Individual Membership	\$25 yr
Junior Historian (students)	\$2 yr
Family Membership	\$35 yr
Supporting Membership	\$60 yr
Life Membership (Individual)	\$250

Direct remittance payable to:
Iola Historical Society
PO Box 412, Iola, WI 54945-0412

iolahistoricalociety@gmail.com
www.iolahistoricalociety.org
715-445-IOLA (4652)

FALL ACTIVITY — cont'd from Page 1



Arne Halvorsen Visited from Norway

On Friday, Oct. 13, the *Chester L. Krause Legacy Park* dedication event, due to inclement weather, was hosted in the Machine Shed. Attendance for the event was roughly 250, with attendees and participants from Omaha, Pittsburgh, Iowa and Florida, and throughout Wisconsin, with former Krause employees solidly represented.

On Tuesday, Oct. 17, we welcomed eight visitors from Turkmenistan, guests of the Rotary Club of Waupaca. The IHS was one of their stops in this area, occasioned by their travels to the United States to gain tips that they might employ in pursuing tourism development in that Eurasian country.

On Wednesday, Oct. 18, Iola-Scandinavia High School's U.S. history teacher Travis Bassett, accompanied by perhaps 30 of his students, spent a couple hours absorbing the community heritage captured in our exhibit presentations, and the other preserved relics that we've archived, along with the *Historic Iola* marker program. This was a field trip question and answer historical research outing.

On Monday, Oct. 23, Iola-Scandinavia's third-grade students, an assembly of roughly 35 total, were conducted on what has for many years been an annual outing to expose youngsters to their heritage. The children's inquisitiveness

and impatience can sometimes make this a somewhat tiresome, even perhaps a bit exasperating, but rewarding exercise for those who serve as docents.

On Wednesday, Oct. 25, the IHS' board and officers met to develop a 2024 budget, to be presented to the membership for their approval at its upcoming meeting. The budget for the coming year is always built off the operational results of the year then coming to a close. We enjoy a modest asset range that is slightly in excess of \$1 million, with operating income and expenses typically falling in the \$15,000 to \$20,000 range.

On Monday, Oct. 30, our last business meetings of the year included the reelection of the presently serving board members and officers, as usual, and approval of the 2024 budget. The evening's program was a reflective presentation by Stanley Jakubek – “Jake the Barber” – recounting the experiences of his 57-year career as Iola's barber.

While it doesn't seem possible, it appears November was devoid of visible activities, though there was a goodly amount of “back-room” business going on, with preparations for year-end activities

— cont'd on Page 4



Stanley “Jake the Barber” Jakubek

As a member of the Iola Historical Society, you are encouraged to patronize the following businesses, which are enrolled as Business Partner member supporters of the organization.

Adeline's Antiques
 340 Main Street
 Scandinavia, WI
 715-412-0945

IOLA SCANDINAVIA
CHAMBER OF COMMERCE
 www.ischamber.com • Facebook: Iola-Scandinavia Chamber

FOSH Friends of Scandinavia History
 Meetings held 2nd
 Monday of Jan, March,
 May, Sept. Nov.
 7 p.m. Municipal Center

Help Support The
Iola Historical Society
 Run Your Business Card in This Space
Call Cliff Mishler
at (715) 445-5050
 For More Information

LASQUA AUTOMOTIVE
FULL SERVICE GARAGE
Phone: 715-445-4200
 -Diagnostics -Tune-ups
 -Diesel Service -Tires

Iola Dental Clinic, S.C.
 www.smiles@ioladental.com
James S. Maus, DDS
 100 Pine Crest Lane
 Iola, WI 54945
 Phone: 715-445-2435
 Fax: 715-445-2554

S & A POLISHING
 We Fix Props!
 We Sell Props!
 We Re-hub Props!
 We Dream Props!
 How Can We Help YOU?
 Eric & Sarah
 Your friendly prop people
 920-244-7950
 N5695 Spring St.
 Ogdensburg, WI 54962
 In the chick coop!

iola
 BOOKKEEPING AND TAX SERVICE LLC
C. ERIC DANIELSON — Owner
 148 N Main Street • PO Box 235
 Iola, WI 54945-0235
 715-445-7780 Fax 715-445-2660 eric@iolataxservice.com

OMHOLT & FORSYTHE, S.C.
Attorneys at Law
 Established 1939
 HISTORICALLY RELEVANT
 IOLA MANAWA
 P.O. Box 215 • 105 Pine Crest Lane P.O. Box 922 • 942 Depot Street
715-445-2511 920-596-2060

Kielblock Logging, LLC
 Kevin Kielblock
 owner
 PO BOX 186
 Scandinavia, WI
 54977
715-340-7279 cell
715-467-3185 home

Iola Family Chiropractic
 Mary Schultz, D.C., ACRB Level II
 Phone: (715) 445-4002
 Fax: (715) 445-4390
 310 North Main St.
 Iola, WI 54945
 iolachiro@tids.net

Like a good neighbor,
 State Farm is there
 See your State Farm Agent:
Dan Tap CLU ChFC
 145 N. Main St., Iola, WI 715-445-2514
statefarm.com • auto • home • life • health
 State Farm Insurance Companies • Home Offices: Bloomington, Ill

SHOEMAKER
Heating & Cooling
 350 N Main St/PO Box 67
 Scandinavia, WI 54977-0067
715-467-3359

The Iola Tax Place
 Expert Tax Prep & IRS Representation
Mary Olson EA
715.445.4TAX
 Tax@TheIolaTaxPlace.com
 www.TheIolaTaxPlace.com

VOIE
 Funeral & Cremation Care
 120 S Main Street | PO Box 216 | Iola, WI 54945
 715.445.2560
 voiefuneralhome@hotmail.com
 www.voiefuneralhome.com

COUNTRYSIDE PROPANE, LLC
 OFFICE MANAGER: PAM LOKEN
 N6337 Hwy 49
 SCANDINAVIA, WI 54977
 715-467-6969 • 1-877-239-8686

FALDET FARMS, INC.
 Iola, WI 54945
 Phone: (715) 445-2453
 Don Faldet
 Bruce Faldet
 Anita Faldet
 Brad Faldet

"It's all in the dough..."
 that's the family secret that has been making
 Crystal Cafe's pies "to die for" for the last 50 years.
 Judy Bolter owner
 Jennifer Schustek manager
 Order a
 Pie to go
 today!
 Let us cater your next event!
 Open 6:30am-7pm
 126 N Main St, Iola, WI 54945
 (715) 445-9227

HOMESTEAD
 REALTY SALES
 Experience - Results - Trust
715-445-2600

1906 Ogdensburg Bank
 WE NEED:
 • Any historic information and/or pictures
 • Skilled volunteers
 • Donations are always appreciated
 CONTACT:
 Sarah Abramson
 920.244.7845
 esinburg@wolffnet.net
 the burg • the burg • the burg

FALL ACTIVITY — *cont'd from Page 2*

underway. These included preparing and mailing membership renewals and fundraisers . . . with a quartet of early December activities in the offing.

On Saturday, Dec. 2, the annual Iola Christmas Parade dissolved at the IHS' Machine Shed, where the community's annual Children's Visit with Santa Claus event is held; these events are sponsored by the Chamber of Commerce and the Iola Lions Club. This year somewhat more than 75 children enjoyed visits with Santa and received their requisite sweet treats.

On Monday, Dec. 11, our annual potluck Christmas banquet program was hosted at the Café of the Iola Mills – formerly "The Millstone" – with about 20 members and guests in attendance. There we recognized four individuals for their efforts: Barbara Kobs, Volunteer of the Year; Marlene & Ron Netzler, Docent(s) of The Year; A special presentation was also made to Doug Watson – Artistic Talent Award – in recognition of his dedicated services over two-plus decades.

On Saturday, Dec. 16, we celebrated the 100th anniversary of Chet Krause's birth on Dec. 16, 1923, complete with cake and cookies, reminiscing with friends, neighbors, past associates and family members, the event witnessing the gathering of perhaps 75 community and collector appreciators of his ties to their lives. It was hosted at the Iola Baptist Church, a structure dating from 1957, when Chet built its core section. Standing across the street from the Chester L. Krause Legacy Park development, built to serve the needs of his fledgling *Numismatic News*, it was occupied by Krause Publications through 1975.

On Sunday, Dec. 17, installation of the much delayed Methodist Church historical marker – "Iola's Methodist Roots" – was finally accomplished in conjunction with the Church's annual Christmas Season potluck luncheon with about 30 parishioners in attendance. The occasion was roughly coincident with the 157th anniversary of the first sermon offered in Iola, delivered by J. J. Hatch on Dec. 4, 1856.

Then, there were some ongoing activities that were of serious involvement throughout

*Chet Krause
Monument Unveiled*



*Chet Krause's 100th
Anniversary Cake*



*Handicapped Pathways
Expanded*



*Iola Methodist
Church Historical
Marker Unveiling*



*High School
History Class
Visits
CWEC Marker*



the Fall. Tradesmen continue to comprehensively attack the restoration and renovation of the interior of the historic Iola & Northern Railroad depot, from the reconstruction of interior walls to reworking the lighting. A team of volunteers has also been hard at work identifying, rearranging and weeding the holdings of the Strand Resource Center and related archived storage.

The displays of tools, machinery and related apparatus in the Machine Shed are being restructured to accommodate the addition of the pair of recently acquired vehicles formerly owned by the late Chet Krause . . . the 1903 Model A Ford Runabout . . . and the 1957 Chevrolet Bel Air 4-door Sedan. A related exhibit in the main museum area, that remains under development, will highlight his services to the communities for which he possessed focused interests.

While the Fall of '23 was a truly busy one on Depot Street . . . as this brief summary review hopefully illuminates . . . more could certainly have been achieved . . . and our service to the community enriched . . . with a higher level of volunteer participation from more members . . . hopefully, one of your *New Year's Resolutions* for 2024 was to consider becoming an engaged member of our team of volunteers!

As a member of the Iola Historical Society, you are encouraged to patronize the following businesses, which are enrolled as Business Partner member supporters of the organization.

PREMIER
COMMUNITY BANK
IOLA OFFICE
505 East State Street | Iola, WI 54945
715-445-4700
premiercommunity.com

Member FDIC Equal Housing Lender

Iola Sentry Foods
Your hometown grocery store since 2007

Doug and Mary Beth Kulinski
125 Meadow Road PO Box 211
Iola, WI 54945
715-445-3316

THE IOLA CAR SHOW
Annual Iola Car Show and Swap Meet
PO Box 1
Iola WI, 54945
715-445-4000
www.iolacardshow.com

Help Support The
Iola Historical Society
Run Your Business Card in This Space
Call Cliff Mishler
at (715) 445-5050
For More Information

Silver Lake Lanes
P.O. Box 186 Hwy 49 - Scandinavia, WI 54977

Sherry, Kevin, Kurt & Kelly Kietblock

- 8 Synthetic Lanes/Auto Scoring
- League/Open Bowling
- Full Menu
- Banquet Room (100)
- Catering Available for all size events
- Volleyball Court/Horseshoe Pits
- Indoor Archery
- Annual 9 - Pin Tourney Jan - April

715-467-2700

MECHANICAL CONNECTIONS
PO Box 273 • Iola, WI 54945
715.445.PIPE

BankFirst
295 E. STATE STREET, IOLA (715) 445-3211
www.bankfirst.com | MEMBER FDIC
EQUAL HOUSING LENDER

WESTLEY
HEATING & AIR CONDITIONING, LLC
Let Our Experience Work For You

- High Efficiency Furnaces
- Air Conditioners
- Hybrid Heat Pumps
- Hydro-Temp Geo Thermal
- Humidifiers • Air Cleaners
- FREE ESTIMATES
- 24 Hour Emergency Service
- Residential
- Commercial
- New Construction

Geoff Williams
OWNER

bryant
Serving the community since 1968

Call: 715.498.8455
Off: 715.258.2368
Fax: 715.467.2883
P.O. Box 292, Waupaca WI 54981

SUBWAY

115 Meadow Road
Iola
715-445-5500

Wealth Management
RBC

Steven E. Abrahamson
First Vice President - Financial Advisor
Consulting Group

756 Jefferson Street
Sturgeon Bay, WI 54235
Office: 920.743.7575
Cell: 920.493.0856

steven.abrahamson@rbc.com
www.rbcwm-usa.com

A division of RBC Capital Markets, LLC,
member NYSE/FINRA/SIPC

Community INSURANCE & ASSOCIATES
Amherst • Iola • Stevens Point • Waupaca

DALE D. BESTUL, CFC
130 N. Main • P.O. Box 236
Iola, WI 54945
dale@community-insurance.com
715.445.3166 • Fax: 715.445.4860

CHAIN O' LAKES LITHO
PRINTING & GRAPHIC DESIGN

120 N. OBORN, WAUPACA, WI 54981
715.258.3524
WWW.CHAINOLAKESLITHO.COM

Business Cards | Brochures | Carbonless Forms
Envelopes | Flyers | Folders | Invitations
Labels | Postcards | Posters | Raffle Tickets | and more...

Help Support The
Iola Historical Society
Run Your Business Card in This Space
Call Cliff Mishler
at (715) 445-5050
For More Information

Mr's Little Norway BAR & GRILL
295 N. MAIN ST., SCANDINAVIA, WI 54977

JO ANN "JOJO" MORK - PROPRIETRESS

FUN, FOOD & SPIRITS

715-467-2318

Community Eyecare Center

Dr. Jeffrey Byers and Dr. Mary Jo Byers

222 South Washington St.
Waupaca, WI 54981
715-258-2020
fax 715-258-9301

135 North Main St.
Iola, WI 54945
715-445-3553
fax 715-445-4970

Central Wisconsin Electric Cooperative
A Consumer Owned Rural Electric System

1-800-377-2932
www.cwecoop.com

Lashua Excavating, INC

The Earth Moves with Lashua

John Lashua
7575 Aanstad Rd. Iola, WI 54945
lashuaexc@tds.net
715-445-2618
Fax 715-445-2181

BRUCE J. MEAGHER, LLC
Attorney At Law

210 Water Street
P.O. Box 335
Iola, WI 54945-0335

(715) 445-7000
Fax: (715) 445-3979

Help Support The
Iola Historical Society
Run Your Business Card in This Space
Call Cliff Mishler
at (715) 445-5050
For More Information

THE MILLSTONE OF IOLA MILLS
Listed on the National Register of Historic Places

Featuring:
Handmade Italian Ice Cream
Espresso Bar
Casual Dining
Locally Brewed Beer

300 N. Main St. - Iola, WI - 715-445-2989 - www.iolamills.com

PRESIDENT'S MESSAGE

Continued from Page 2

product that was already in process.

Having explained what happened . . . I'd also like to publicly acknowledge and thank Doug for the splendid job he performed over those 16 years . . . sharing with the membership, in doing so, my assessment and insight into the diversity and excellence of talent that he brought to the task.

Born at Argyle in southwestern Wisconsin in 1940, Doug was 24 when he pulled up roots and headed up to the Iola-Scandinavia area with his young family. Initially taking up residence in a rural location just outside of Iola, early on he opted to adopt Scandinavia as his residence, where he has now been living for more than 55 years.

Doug's move to our area was occasioned by an opportunity to join Krause Publications in a multifaceted function involving advertising sales, design and layout, along with photography. In a real sense, as he has sometimes put it, he actually became "the art department" of the company in those days, also charged with creating magazine cover and layout designs, and editorial cartoons.

Through nearly a quarter century, with the exception of a period of about three years from 1974 to 1978, Doug was engaged at Krause Publications from 1964 to 1987. During that time, he had struck out on his own for a short interim, as a sign painter and graphic artist. Returning to the company in 1978, he spent the next ten years managing its' pre-press publishing department, in addition to functioning as art director.

Leaving the company for a second time in 1987, Doug became an independent publisher, having

acquired from Krause a title – *Paper Collectors' Marketplace* – that was no longer a fit for its' publishing thrust. He published that title for the next ten years, selling it to another party at the close of 1996, at that time returning to his publishing roots as a contract provider of graphic services to others, including newsletters serving some of the organizations of his involvement.

Doug's publishing initiatives have truly been quite varied. In 1967, as one of the founders of the Civil War Token Society, he edited and published the first issues of that organization's *Journal*. In 1981 he was centrally involved in the company's entry into the sports card collecting realm, genesis of the greatest growth in its history. A champion of diversity, in 1986, he also inaugurated *Country Sounds*, a Krause periodical in the music realm.

As varied as Doug's publishing involvements have been through the years, his personal involvement pursuits as a collector have been even more diverse. In addition to being an enthusiast of St. Louis Cardinals baseball memorabilia and Wisconsin Civil War tokens, he has also been an avid collector of railroad lanterns, to mention yet another of his diverse interests. Then, there has been his dedication to nurturing Monarch butterflies and support of a horse rescue organization.

Turning to community activities, Doug was responsible for the creation of, and chaired the annual Scandinavia Corn Roast in its early years, it being a primary fundraiser of the Scandinavia Booster Club. He has for many years been a dedicated volunteer at the Wisconsin Veterans Home at King. Back in his hometown, he has been a longtime supporter of the Argyle Historical Society and his high school class reunion group.

A founder and driving force of the Friends of Scandinavia History (FOSH), since its founding in 2005, Doug in 2023 stepped down from the

president's role. A life member of the Iola Historical Society, serving as a member of the board 2006-2013, in addition to being the major contributor to the graphic presentation of *Window*, he has also been the guiding hand behind our exhibit and promotional material presentation developments over the past 20 years.



**Doug Watson Receives
Artistic Talent Award / Special Recognition**

To appreciate the quality of Doug's talent level and workmanship, pause for a bit, if you will, when visiting the main museum building, absorbing and appreciating the outstanding exhibit presentations of his creation . . . Bert Stromberg, Iola's Violin Maker . . . Lee Nelson, Iola's Humble Hero . . . the Towne Native American Artifacts . . . along with other touches here and there among the museum exhibits and around the Iola Historic Village campus.

For all that and more, our organization and the membership owe Doug . . . **A HEARTY THANK YOU!** . . . be sure to extend your personal congratulations the next time you cross paths with him.

Gone, But Fondly Recalled

Lest we forget, recalled below are valued friends and members who passed recently. Please remember them with appreciation, as you reflect on their valued contributions to preserving the heritage of our community and area.

Helene Mae (Rowe) Furst

Passing away on September 5, 2023, in Cookeville, Tennessee, Helene was a long-time out-of-town member with abiding family ties to our community. Born on the family farm near Scandinavia to Harry and Ella Rowe on May 23, 1926, she relished her Norwegian heritage – she was a proud and in-demand lefse maker – and whose IHS membership was an aid in maintaining contact with her family roots. After graduating from Scandinavia High School, Helene was a 1948 Luther College graduate, having become the first in her family to attend college, and subsequently earned a Master of Library Science degree at the University of Michigan. Helene married Edward Furst in 1951, with whom she lived and raised their family of three children in pursuit of his professorships in several college towns, the last move being to Fayetteville, Arkansas, where they established deep roots and resided for 50 years.

WANTED . . . Can You Help?

Introducing a new *Window* feature . . .
it will appear from time to time . . .
when a need has been identified . . .
to which a member or reader might
be able to favorably respond.

Clothing Display Tools

We could use some mannequins and padded hangers to facilitate placing the clothing stored in our archive on display. This need is both long range and imminent in nature . . . the program set for our February meeting . . . will feature a retrospective viewing of a variety of clothing items archived from local families.

Contact Lee Halverson
lesuhalv@wi-net.com or 715-677-4918.



Everything One Needed . . . Perhaps?



There was no question regarding this mystery photo, with respect to the What? This merchant of the day was dispensing to a rural community's every need . . . Dry-Goods . . . Shoes . . . *Fancy Groceries*.

Is there anyone out there who can provide any identifications . . . or clues? . . . Where was the store located? . . . When would the picture have been taken? . . . Who are the individuals captured in the photo? . . . Including the infant at the side of the lady? . . . Given the randomly strewn lumber remains and the three-step-ladder to the left of the buckboard, the picture was likely taken shortly after construction of the store was completed and opened for business.

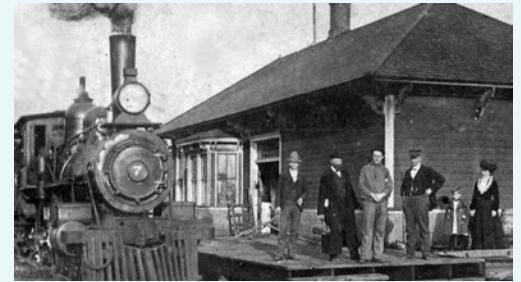
Put your thinking cap on and let us know what you come up with? Please respond by phone: 715-445-IOLA (4652) or by e-mail: IolaHistoricalSociety@gmail.com or by postal mail: IHS, P. O. Box 412, Iola, WI 54945. Responses will be shared in the Spring 2024 issue of the *Window* and archived following publication.

Just Another Day for the Iola & Northern

Nary a single response was received that might shed additional light on the scene captured at the Iola & Northern depot mystery photo published in the Fall 2023 issue of the *Window*.

Locomotive #7 appeared fired up for departure when the photographer captured the grouping on the loading platform. The well-dressed man, second from the left, was hefting a travelling satchel in his right hand. Next to the right, in work clothes, was quite possibly the engineer. The man third from the right, appeared to be decked out in conductor attire. On the right, a lady and her child appear to have been well-dressed for out-of-town travel.

Please take another gander at the ingredients that were captured and let us know if any of them now ring a bell. Speculation, in the absence of facts, is certainly welcome.



Donors & Loaners October – November – December

The Iola Historical Society expresses its appreciation to the following individuals and organizations for contributing donations to our archive of historical relics, and/or cash gifts, or in-kind services support benefitting its operations, during the past quarter:

Archival Donations of Historic Relics:

Kathy Bestul ("Hilsen fra Norge" framed needle point), Leggie Gullixon (Lee Nelson wood figure carved 1991), Angelo van Bogart (two "Duesenberg SSJ" books for library).

Donations of Cash and In-Kind Services:

Robert D. Andrews (cash for '03 Ford Model A fundraiser, IMO John Gunnell), Mary J. Bennett (cash for CLK display), Central Wisconsin Tractor Club (cash for '03 Ford Model A fundraiser), Howard & Roberta Cook (cash for '03 Ford Model A fundraiser), Donald C. Dineen (cash undesignated), Mark Doll (cash undesignated), Trey & Mary Foerster (cash for Depot project), David C. Harper (cash undesignated), Ruth Johnson (cash for Log Cabin fund), Ed Lamar (cash undesignated, via Rotary Club of Waupaca), Greg Loescher (US flag lapel pins for CLK dedication; cash donation for Historic Iola marker program), Bonny Pethke (painting Depot rebuild structure), Charles W. Thompson (cash for '03 Ford Model A fundraiser), Voie Funeral Home (endowment donation), Julian Wesley (cash for '03 Ford Model A fundraiser), Faith Wolberg (cash for Depot project).

2023/24 Supporting Members:

The Iola Historical Society wishes to express special thanks and recognition to the following individuals and organizations for their dedicated Supporting Member financial contributor status for the ongoing operational activities of the Society: Louis & Louise Adams, Scott & Karri Bestul, LeRoy & Carolyn Borth, Yvonne Gurholt, Donna Hooker, Iola & Rural Fire Service, Ruth C. Johnson, Lanna & Don Langdok, Thomas & Linda Martin.

2024 EVENTS SCHEDULE

Monday, January 29, 2024

5:30 IHS Board Meeting
6:30 IHS General Meeting
First 2024 Business Meetings
7:00 Program: Jerry Finch
Iola Childhood Recalled

Monday, February 26, 2024

5:30 IHS Board Meeting
6:30 IHS General Meeting
7:00 Program: From Archive
Clothing Styles of Past

Monday, March 25, 2024

5:30 IHS Board Meeting
6:30 IHS General Meeting
7:00 Program: Iola Herald
Stores & Stories of Past

Monday, April 29, 2024

5:30 IHS Board Meeting
6:30 IHS General Meeting
7:00 Program: Dr. Schroeder
UW Anthropologist
Dugout Canoe Insights

Monday, May 27, 2024

Noon – 2:00 2024 Annual Memorial Day
Pork Roast - Salute to Military Veterans

Tuesday, May 28, 2024

5:30 IHS Board Meeting
6:30 IHS General Meeting
7:00 Program: Members
Share Show 'n' Tell Relics

All Members and General Public Welcome to Attend All Meetings and Programs
(All IHS activities held at Depot Street complex unless otherwise indicated.)